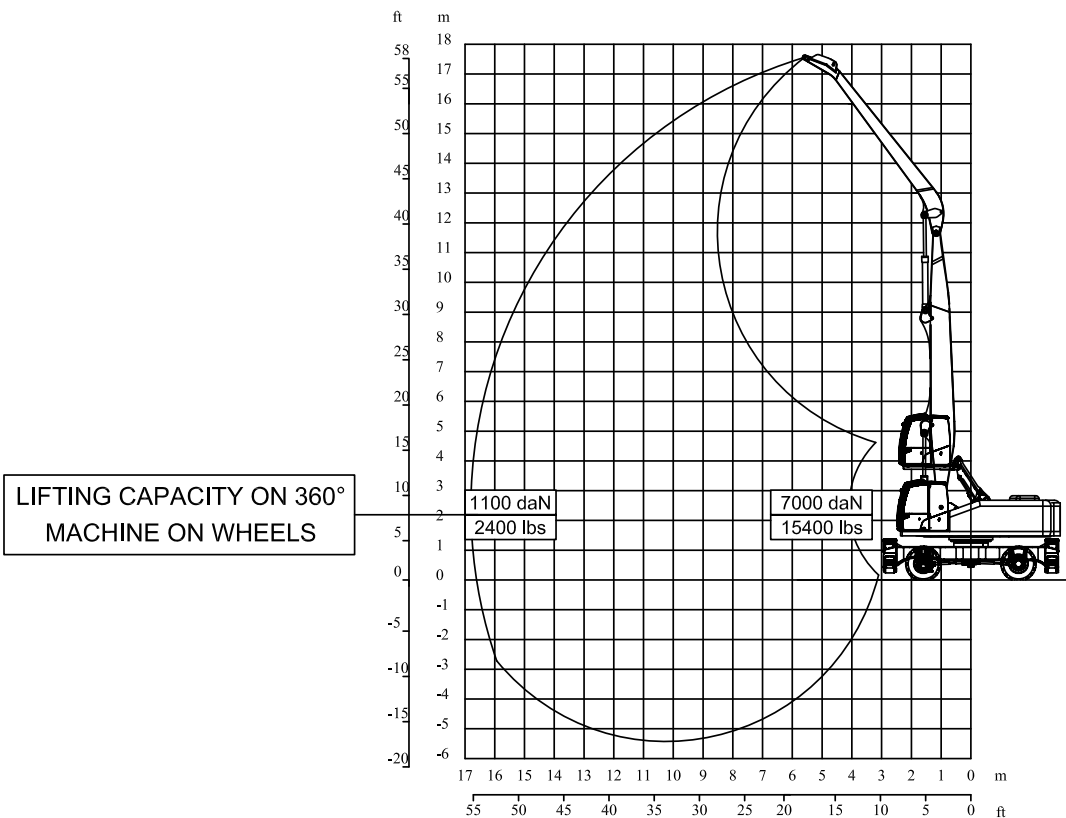
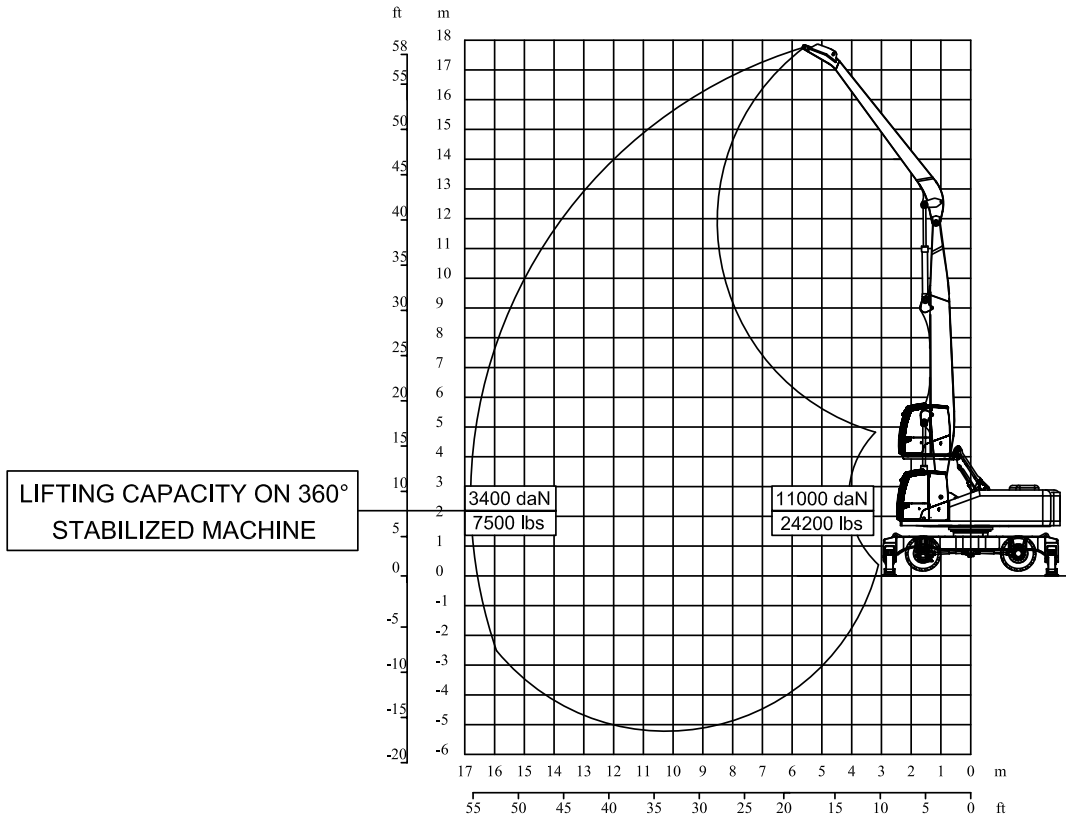


Lifting capacities

The lifting capacities (daN - lbs) with rotation 360° are expressed with a safety factor.



OPERATING CHARACTERISTICS

Machine weight88,200 lb
 Max lifting arm capacity/
 boom extension9,300 lb / 55 ft
 Loading boomfixed L: 55 ft

TECHNICAL CHARACTERISTICS

Diesel engine Turbo D.I. Common Rail (Perkins)
 Engine power253 HP - 2200 Rpm
 N° of cylinders / cubic capacity6 / 6.6 l
 Cooling systemcooling liquid
 Engine compartmentsound insulated
 Engine supportsdamper monted

HYDRAULIC SYSTEM

PumpsN°2 axial piston, N°3 gear
 Operating pressure4,800 PSI
 High pressure systemflexible hoses /steel
 Pipe fittingsORFS
 Oil coolingair-oil cooler
 Service & emergency brakespedal-operated hydraulic
 Parking brakemechanical
 Driver power steeringgear pump
 Transmission4 wheel drive
 Hydraulic motorvariable displ. axial piston
 Axlesepicyclic reduction gear (hubs)
 Swing axle lockinghydraulic
 Speed first gear0-4 mile / h
 Speed second gear0-10 mile / h
 Sound insulated cabinpantograph hydraulic elevation
 Seatservo controls integrated
 Fuel tank capacity120 gal
 Hydraulic oil tank capacity132 gal

ACCESSORIES

Standard

- Hydraulic rear stabilizers
- Front hydraulic stabilizers
- 4 wheel drive
- Air conditioner
- Automatic centralized greasing system
- Electro hydraulic generator 21 kW
- Magnetic plate 57 in (Ø1450 mm)

Optional

- Radio

Dimensions

