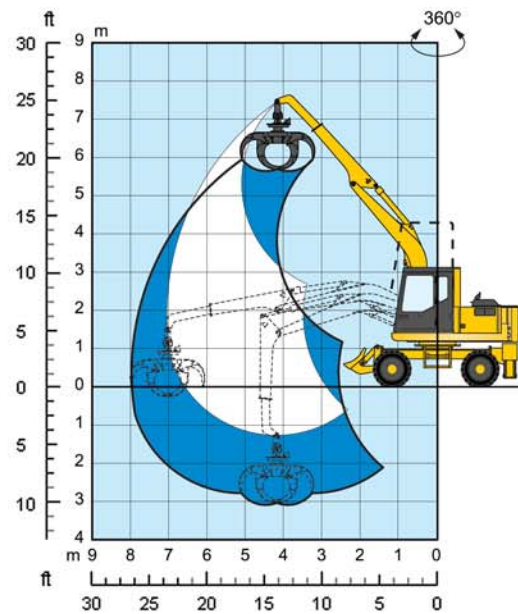
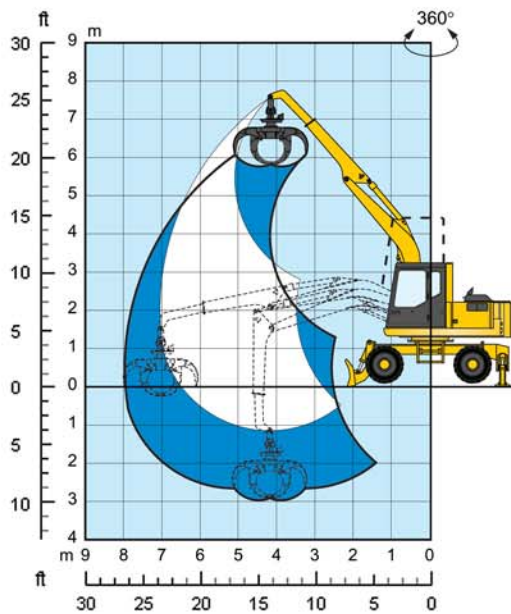


Lifting capacities

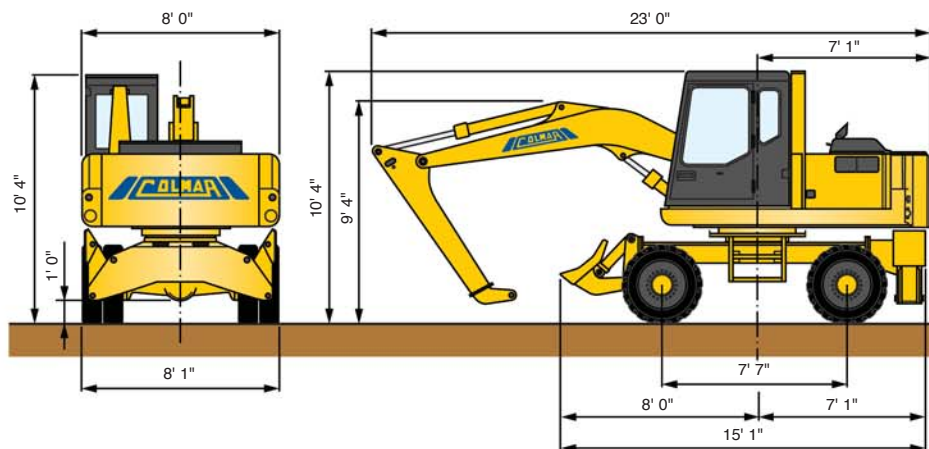


HEIGHT (ft)	OPERATING RANGE (ft)				
	9.84	13.12	16.40	19.68	22.97
19.68	-	-	9055.09	-	-
14.76	-	9940.92	10367.42	9055.09	-
9.84	-	13254.55	12237.5	10957.97	-
4.92	-	16863.47	13484.21	11581.33	8202.07
0	23818.83	18471.07	14501.27	11909.41	-

HEIGHT (ft)	OPERATING RANGE (ft)				
	9.84	13.12	16.40	19.68	22.97
19.68	-	-	9055.09	-	-
14.76	-	9940.92	10367.42	8923.86	-
9.84	-	14632.5	10925.16	8398.93	-
4.92	-	15288.67	10695.51	8300.5	6561.66
0	23720.4	15124.63	10597.08	8333.31	-

The lifting capacities with rotation 360° are expressed in daN without a safety factor.

Dimensions



Technical characteristics

Codice: 201 - 02 - 04

ENGINE

Type4-stroke diesel, direct injection
 Number of cylinders.....4
 Max power.....59 kW (80 HP) at 2500 rpm
 Displacement.244.1 cubic inches
 Coolingliquid
 Air filterdry
 Sound insulated engine compartment.
 Engine assembled on vibration-dampers.

ELECTRIC SYSTEM

Operating voltage24 V
 Alternator40 A / 24 V
 Batteries2 x 110 Ah / 12 V

HYDRAULIC SYSTEM

Hydraulic system consisting of:
 N.1 variable displacement axial piston pump with regulation of power required.
 Max rated flow29.06 gal / min
 Modular distributors with anti-shock and anti-cavitation valves on the sections.
 N.1 gear pump for auxiliary services and power steering.
 N.1 gear pump for servo controls.
 Max working pressure3916.02 PSI
 Ergonomic control devices with integrated auxiliary function buttons.

JACKS

Lifting: n.1 cylinderØ 4.92 x 29.33 in
 Arm: n.1 cylinder.....Ø 4.33 x 38.58 in
 Telescopic: n.1 cylinderØ 3.15 x 35.43 in
 Circuit with multispiral hoses, very high pressure steel pipes, ORFS face seal fittings, steel safety valves.
 Hydraulic oil cooling by air-oil heat exchanger combined with diesel engine radiator.

TURRET ROTATION

Rotation by means of radial piston hydraulic motor coupled to epicyclic reduction gear with pinion operating on internally toothed slewing ring.
 Braking valve assembly integral with hydraulic motor.
 Slew ring with double row of bearingsØ 38.58 in
 Rotation speed.....0 - 8 rpm

Twinned front and back wheels with solid beads, size 9.00 - 20.

BRAKES

Pedal-operated hydraulic service and emergency brake.
 Cab control parking brake operating on transmission.

STEERING

Controlled from the cab with gear pump driven power steering.

TRANSMISSION

2/4 driving wheel with hydrostatic transmission, self adjusting variable displacement axial piston hydraulic motor. 2-speed gear box selectable from the cab.
 Axles with epicyclic reduction gear on the hubs.
 Swinging front axle with hydraulic lock.
 Ground speed in 1st gear..... 0 - 3.1 mph
 Ground speed in 2nd gear..... 0 - 7.5 mph

DRIVE CAB

All round visibility hydraulic elevation sound insulated cab with front window retractable into roof.
 Adjustable seat with servo controls integrated into armrests.
 Dash board complete with following indicators: engine oil pressure, engine water temperature, fuel level tachometer, hour counter.
 Alarm and regular working indicators.
 Acoustic and visual overload indicator.
 Push button panel for cab elevation, swinging axle lock, lights, fan, windscreen wiper, window washer.

FUEL AND OIL CAPACITIES

Fuel tank capacity47.55 gal
 Cooling liquid6.6 gal
 Diesel engine oil 5.28 gal
 Hydraulic oil tank capacity52.83 gal

WEIGHT (approximate)

Weight33069.3 lbs