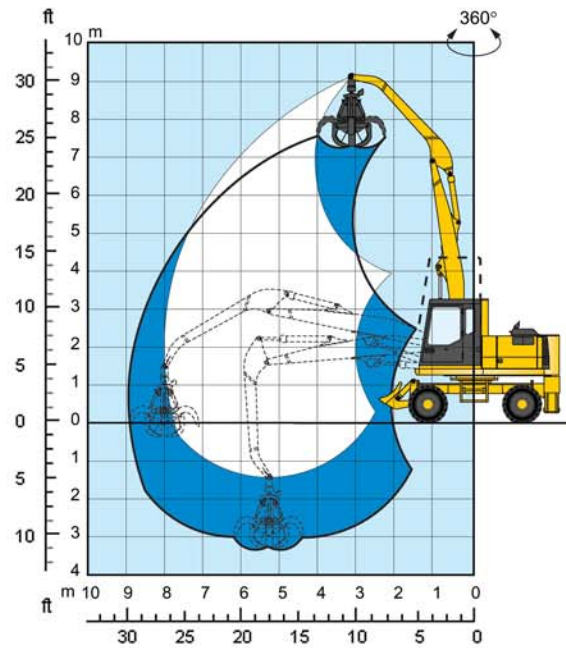
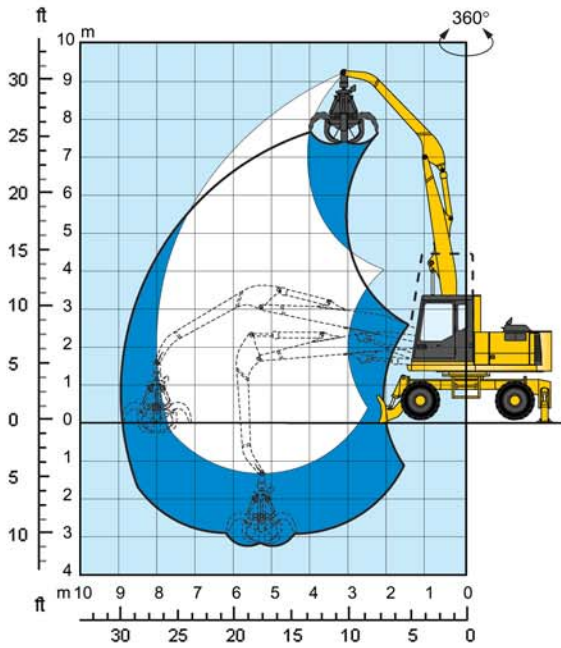


## Lifting capacities

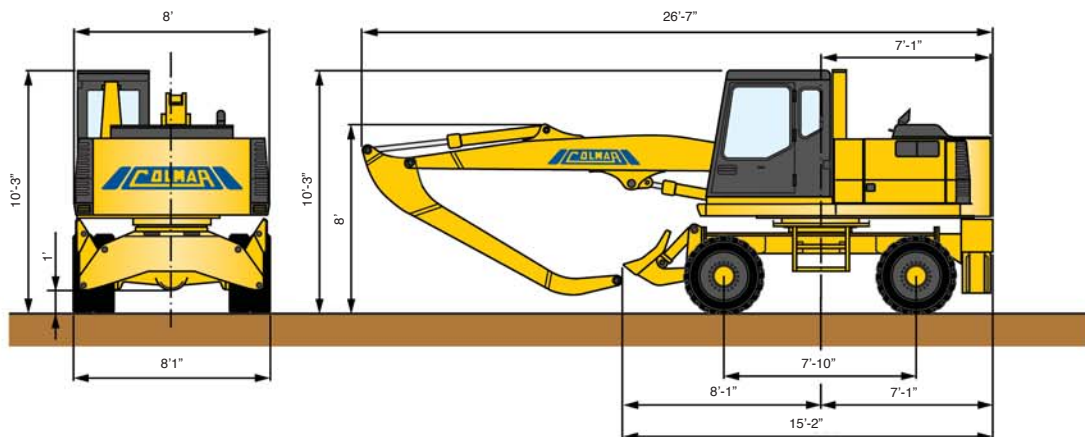


HEIGHT (ft)	OPERATING RANGE (ft)					
	9.84	13.12	16.4019	68	22.97	26.25
26.25	-	16797.85	-	-	-	-
19.68	-	15780.79	13877.91	12467.15	-	-
13.12	18110.18	18011.76	14993.39	12959.28	11614.14	-
6.56	22178.41	20439.57	16338.53	13484.21	11384.48	10334.61
0	18602.31	19455.32	15518.33	12631.2	10203.38	-

HEIGHT (ft)	OPERATING RANGE (ft)					
	9.84	13.12	16.4019	68	22.97	26.25
26.25	-	16797.85	-	-	-	-
19.68	-	15059.01	12303.11	10531.46	-	-
13.12	18110.18	14468.46	11876.6	10269	8202.08	-
6.56	19455.32	13517.02	11253.25	9842.49	7972.42	7349.06
0	18602.31	13024.9	10859.55	9547.22	7775.57	-

The lifting capacities with rotation 360° are expressed in daN without a safety factor.

## Dimensions



**Technical characteristics**

Codice: 302 - 02 - 04

**ENGINE**

Type..... 4-stroke diesel, direct injection turbo-charged  
 Number of cylinders.....4  
 Max power.....75 kW (102HP) at 2200 rpm  
 Displacement.....268.50 cubic inches  
 Cooling .....liquid  
 Air filter .....dry  
 Sound insulated engine compartment.  
 Engine assembled on vibration-dampers.

**ELECTRIC SYSTEM**

Operating voltage..... 24 V  
 Alternator..... 55 A / 24 V  
 Batteries ..... 2 x 110 Ah / 12 V

**HYDRAULIC SYSTEM**

Hydraulic system consisting of:  
 N.2 variable displacement piston pump with regulation of summing constant power control.  
 Max rated flow ..... 31.96 + 31.96 gal / min  
 Modular distributors with anti-shock and anti-cavitation valves on the sections.  
 N.1 gear pump for auxiliary services and power steering.  
 N.1 gear pump for servo controls.  
 Max working pressure .....4351.13 PSI  
 Ergonomic control devices with integrated auxiliary function buttons.

**JACKS**

Lifting: n.1 cylinder..... Ø 4.92 x 38.58 in  
 Arm: n.1 cylinder..... Ø 4.33 x 38.58 in  
 Circuit with multi-spiral hoses, very high pressure steel pipes, ORFS face seal fittings, steel safety valves.  
 Hydraulic oil cooling by air-oil heat exchanger combined with diesel engine radiator.

**TURRET ROTATION**

Rotation by means of axial piston hydraulic motor coupled to two stage epicyclic reduction gear with pinion operating on internally toothed slewing ring.  
 Braking valve assembly integral with hydraulic motor.  
 Slew ring with double row of bearings.....Ø 139.37 in  
 Rotation speed.....0 - 10 rpm

**TIRES**

Twinned front and back wheels with super elastic solid beads, size 9.00 – 20.

**BRAKES**

Pedal-operated hydraulic service and emergency brake.  
 Cab controlled parking brake operating on transmission.

**STEERING**

Controlled from the cab with gear pump driven power steering.

**TRANSMISSION**

4-wheel drive with hydrostatic transmission, self adjusting variable displacement axial piston hydraulic motor.  
 2-speed gear box selectable from the cab.  
 Axles with epicyclic reduction gear on the hubs.  
 Swinging front axle with hydraulic lock.  
 Ground speed in 1st gear. ....0 - 2.5 mph  
 Ground speed in 2nd gear .....0 - 9.3 mph

**DRIVE CAB**

All round visibility hydraulic elevation sound insulated cab with front window retractable into roof.  
 Adjustable seat with servo controls integrated into arm-rests.  
 Dash board complete with following indicators:  
 engine oil pressure, engine water temperature, fuel level tachometer, revolution counter, hour counter.  
 Alarm and regular working indicators.  
 Acoustic overload indicator.  
 Push button panel for cab elevation, speed selection, parking brake, swinging axle lock, lights, fan, wind-screen wiper, window washer.

**FUEL AND OIL CAPACITIES**

Fuel tank .....47.55 gal  
 Diesel engine cooling fluid ..... 6.6 gal  
 Engine oil ..... 5.28 gal  
 Hydraulic oil tank .....52.83 gal

Operating weight .....38139.9 lbs