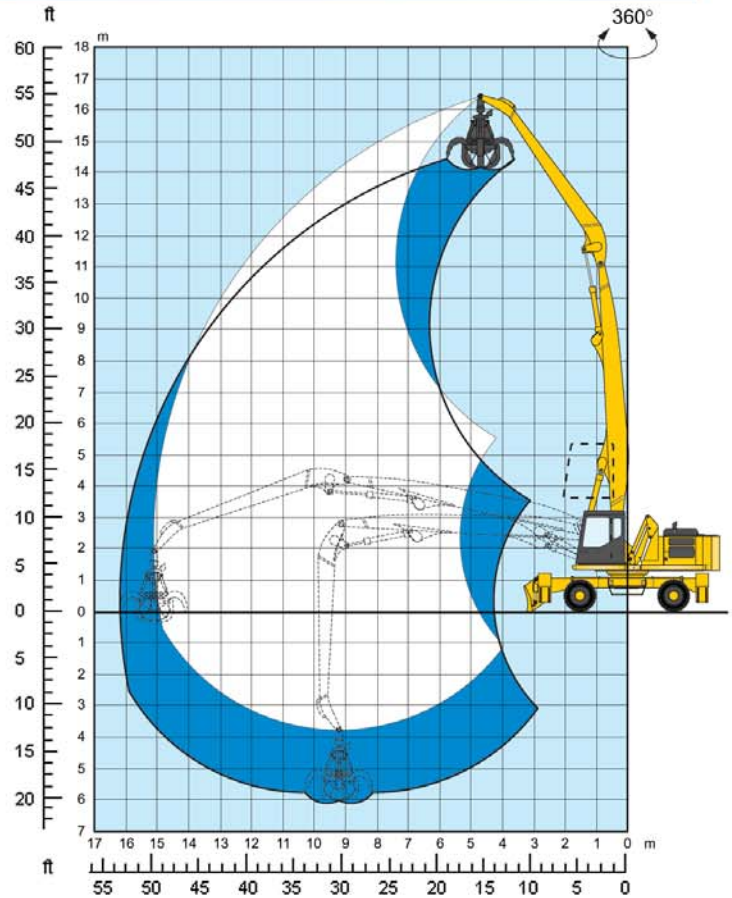
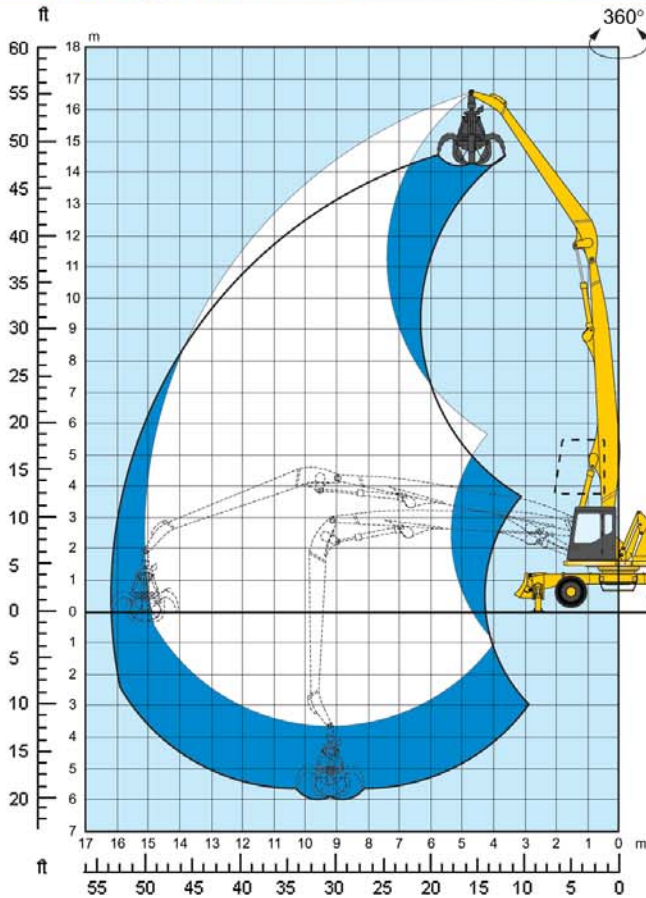


## Lifting capacities

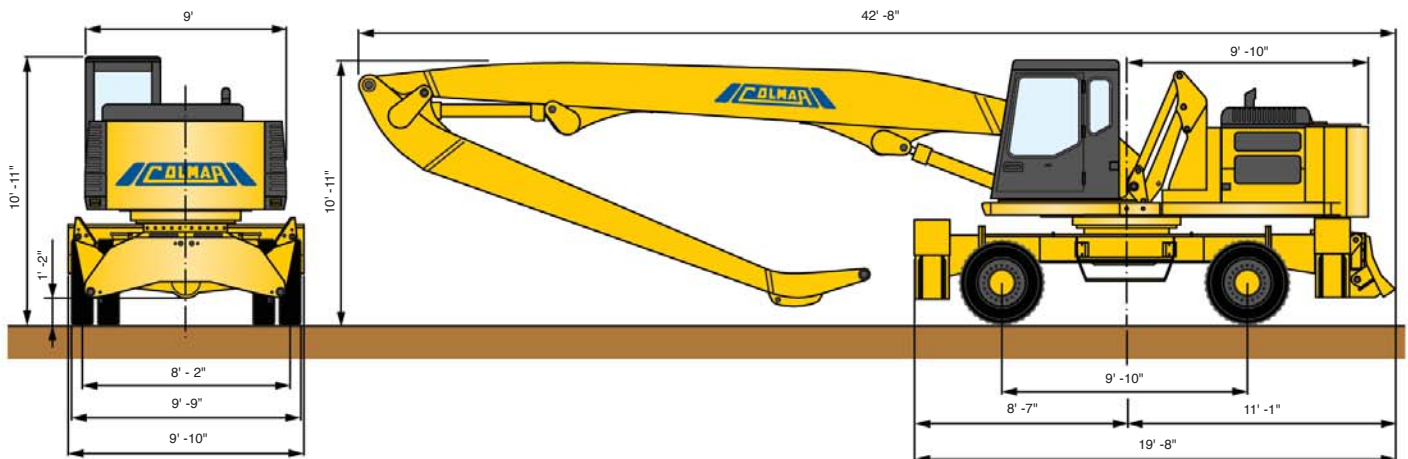


HEIGHT (ft)	OPERATING RANGE (ft)						
	17.38	19.68	26.25	32.81	39.37	45.93	49.21
45.93	-	-	24507.8	-	-	-	-
39.37	-	-	23687.59	22736.15	-	-	-
32.81	-	-	19553.75	19094.43	19783.4	-	-
26.25	-	-	20800.46	19783.4	17191.55	-	-
19.68	-	28247.95	23195.47	21194.16	17880.52	-	-
13.12	-	34809.61	26443.49	23064.23	17847.72	13812.29	-
6.56	48195.39	41338.46	29757.13	23753.21	17191.55	13451.4	12007.84
0	-	45341.07	31660.01	22801.77	16633.81	13156.13	-
-6.56	-	46030.04	30774.19	22178.41	16272.92	13024.9	-

HEIGHT (ft)	OPERATING RANGE (ft)						
	17.38	19.68	26.25	32.81	39.37	45.93	49.21
45.93	-	-	24507.8	-	-	-	-
39.37	-	-	23687.59	19684.98	-	-	-
32.81	-	-	19553.75	16043.26	14435.65	-	-
26.25	-	-	20800.46	15551.13	11023.59	-	-
19.68	-	28247.95	21358.2	14632.5	10531.46	-	-
13.12	-	29757.13	19324.09	13484.21	9842.49	7217.83	-
6.56	30413.29	25754.52	17257.17	12303.11	9153.52	6824.13	5905.49
0	-	23195.47	15682.37	11318.86	8530.16	6496.04	-
-6.56	-	22079.99	14730.93	10662.7	8136.46	6332	-

The lifting capacities with rotation 360° are expressed in daN without a safety factor.

## Dimensions



**Technical characteristics**

Codice: 605 - 02 - 04

**ENGINE**

Type .....4-stroke diesel, direct injection,  
turbo-charged and after-cooled  
Number of cylinders.....6  
Max power.....238 HP (175 kW) at 2400 rpm  
Displacement.....436.32 cubic inches  
Cooling .....liquid  
Air filter .....dry  
Sound insulated engine compartment.  
Engine assembled on vibration-dampers.

**ELECTRIC SYSTEM**

Operating voltage..... 24 V  
Alternator..... 40 A / 24 V  
Batteries ..... 2 x 110 Ah / 12 V

**HYDRAULIC SYSTEM**

LFSS (Logic Flow Summation System) hydraulic system consisting of:  
N.1 axial piston pump for lifting, bucket and traction.  
N.1 axial piston pump for arm and rotation.  
N.1 axial-piston pump for turret rotation.  
Constant power control.  
Max rated flow.....56.53 + 56.53 + 42.27 gal / min  
En-bloc distributor with automatic fluid flow rate summing devices.  
N.1 gear pump for auxiliary services and power steering.  
N.1 gear pump for servo controls.  
Max working pressure..... 4351.13 PSI  
Ergonomic control devices with integrated auxiliary function buttons.

**JACKS**

Lifting: n.2 cylinders ..... Ø 150 x 1200 mm  
Arm: n.2 cylinders..... Ø 140 x 1050 mm  
End-of-stroke deceleration device.  
Circuit with multi-spiral hoses, very high pressure steel pipes, ORFS face seal fittings, steel safety valves.  
Hydraulic oil cooling by air-oil heat exchanger combined with diesel engine radiator.

**TURRET ROTATION**

Rotation by means of axial piston hydraulic motor coupled to two stage epicyclic reduction gear with pinion operating on internally toothed slewing ring.  
Braking valve assembly integral with hydraulic motor.  
Slew ring with double row of bearings .....Ø 52.76 in  
Rotation speed..... 0 - 8 rpm

**TIRES**

Twinned front and back wheels with super elastic solid beads, size 12.00 - 20.

**STEERING**

Controlled from the cab with gear pump driven power steering.

**TRANSMISSION**

4-wheel drive with hydrostatic transmission with self adjusting variable displacement axial piston hydraulic motor.  
2-speed gear box selectable from the cab.  
Axles with epicyclic reduction gear on the hubs.  
Swinging front axle with hydraulic lock.  
Ground speed in 1<sup>st</sup> gear ..... 0 - 3.1 mph  
Ground speed in 2<sup>nd</sup> gear .....0 - 7.5 mph

**DRIVE CAB**

All round visibility hydraulic elevation sound insulated cab with front window retractable into roof.  
Adjustable seat with servo controls integrated into armrests.  
Digital dash board complete with following indicators: engine oil pressure, engine water temperature, fuel level tachometer, revolution counter, hour counter and clock.  
Alarm and regular working indicators.  
Push button panel for cab elevation, speed selection, parking brake, lights, fan, windscreen wiper, window washer.

**FUEL AND OIL CAPACITIES**

Fuel tank capacity..... 81.89 gal  
Cooling liquid..... 6.6 gal  
Diesel engine oil..... 7.66 gal  
Hydraulic oil tank capacity.....105.67 gal

**WEIGHTS (APPROXIMATE)**

Weight..... 81570.94 lb