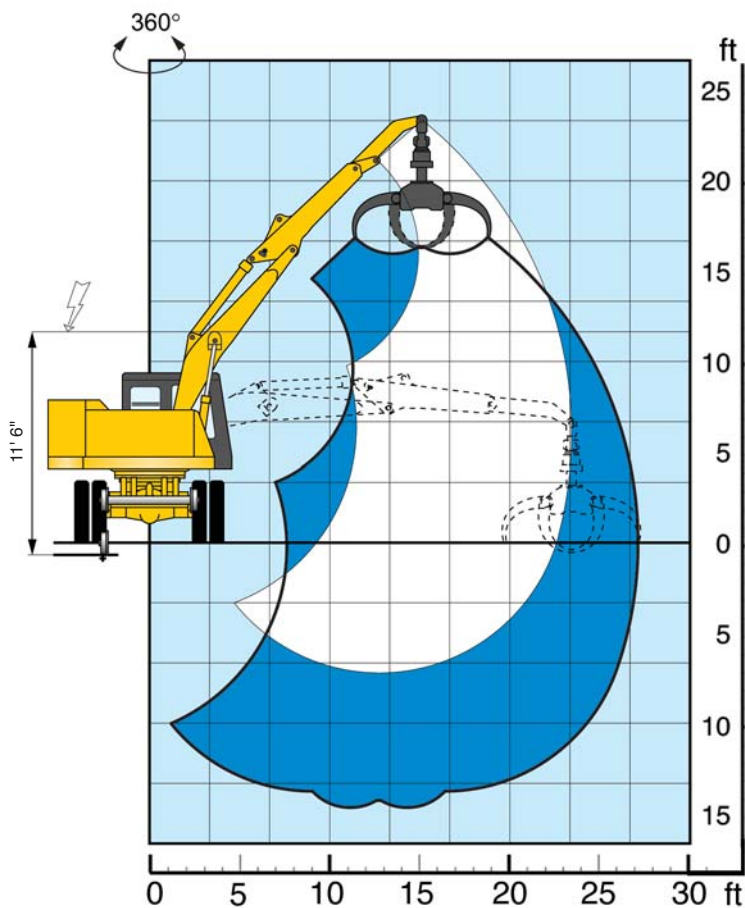


# T 4300 FS



## Capacity diagram



### Road configuration

HEIGHT (ft)		OPERATING RANGE (ft)			
		11.48	16.40	19.68	22.97
19.68	Long.	-	18044.56	-	-
	360°	-	17388.4	-	-
14.76	Long.	-	18044.56	16732.23	-
	360°	-	17388.4	12959.28	-
9.84	Long.	-	19520.9	18700.73	-
	360°	-	16896.27	12467.15	-
4.92	Long.	27887.06	22145.6	18700.73	14927.78
	360°	27394.93	16404.15	12467.1	10498.66
0	Long.	31167.88	23621.98	18536.69	-
	360°	26738.76	16240.11	12303.11	-

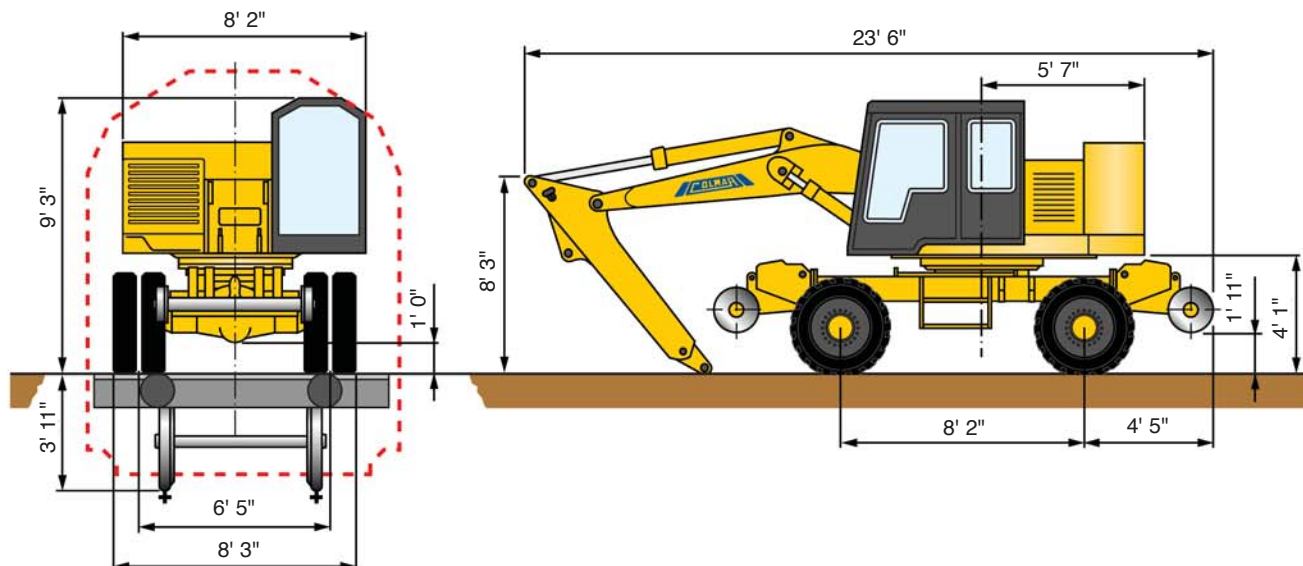
Lifting capacity on 360° rotation expressed in daN without safety factors.

### Rail configuration

HEIGHT (ft)		OPERATING RANGE (ft)			
		11.48	16.40	19.68	22.96
19.68	Long.	-	18044.56	-	-
	360°	-	12631.2	-	-
14.76	Long.	-	18044.56	-	-
	360°	-	12631.2	-	-
9.84	Long.	-	19520.94	16568.19	-
	360°	-	12303.11	9514.41	-
4.92	Long.	27887.06	22145.6	19192.86	16404.15
	360°	18700.73	11810.99	9350.37	7742.76
0	Long.	31167.88	24934.31	19028.81	-
	360°	18044.56	11482.9	9186.32	-

Lifting capacity on 360° rotation expressed in daN without safety factors.

## Dimensions



## Technical characteristics

Codice: T 4300 - 02 - 04

### ENGINE

Type .....4-stroke diesel, direct injection  
 Number of cylinders.....6  
 Max power.....78 kW (106 HP) at 2300 rpm  
 Displacement.....366.14 cubic inches  
 Cooling.....air  
 Air filter .....dry  
 Soundproofed engine housing.  
 Engine assembled on vibration-dampers.

### ELECTRIC SYSTEM

Operating voltage..... 24 V  
 Alternator..... 35 A / 24 V  
 Starter..... 4 kW  
 Batteries..... 2 x 110 Ah / 12 V

### HYDRAULIC SYSTEM

Axial piston double pump with constant pressure regulation.  
 Max capacity .....48.61 + 48.61 gal / min  
 Lifting circuit max pressure.....3770.98 PSI  
 Motion circuit max pressure ..... 4351.13 PSI  
 Auxiliary circuit max pressure.....2175.57 PSI  
 Servo-control circuit max pressure ..... 435.11 PSI  
 The servo-control circuit is fed by an independent gear pump with pressure accumulator for movements with still engine.

### JACKS

Primary lifting: N° 2 jacks .....Ø 4.33 x 32.28 in  
 Secondary lifting: N° 1 jack .....Ø 4.92 x 47.24 in  
 Telescopic extension: N° 1 jack.....Ø 3.15 x 39.37 in  
 Circuit with multi-spiral hoses, bonderized steel pipes, safety valves on main circuit as required by accident-prevention regulations.  
 Height limit switch on hydraulic lock to limit height when working on electrified rail.

### TURRET ROTATION

Rotation obtained by a radial piston hydraulic motor on an epicyclic reduction gear with pinion turning on a ball bearing slewing ring with internal gear.  
 Group of crossed double external brake valves with anti-cavitation valve.  
 Slewing ring .....Ø 3.81 ft  
 Rotation speed.....0 - 10 rpm  
 Turret mechanic safety lock for driving on road.  
 Electro-hydraulic and mechanic locks at 180° alternated for operation on coupled rails. Negative brake with automatic hydraulic unlocking. Emergency system for shape recovery.

Front and rear twinned tires 9.00 - 20 XZM.

### BRAKES

Service, emergency and operating brakes with pedal-operated hydraulic control. Split circuit on the four wheels. Parking brake with hydraulic control by a lever in the cab, negative type action.  
 Block braking on rail wheels.

### STEERING

Fed by a gear pump. Hydrostatic control with safety valves and power steering.  
 Steering hydraulic lock in rail position.

### TRANSMISSION

Hydrostatic transmission by a variable self-regulating displacement hydraulic motor with axial pistons. Shock-resistant valve with external braking and anti-cavitation. Axles with epicyclic reduction gears on wheels. Hydraulic locking of front axle swinging. Rail transmission by contact between rail wheels and tires with contact pressure register and steering hydraulic lock.  
 Independent front and rear rail bogies hydraulically controlled from the cab.  
 Swinging front rail axle with hydraulic cylinders for swinging lock.  
 3-speed gear box with hydraulic selection from the cab.  
 1st gear working speed .....0 - 2.49 mph  
 2nd gear working speed .....0 - 7.46 mph  
 3rd gear working speed.....0 - 15.53 mph

### DRIVE CAB

Steel sheet all round visibility sound insulated cab, with accident-prevention glasses, electric window washer and protection. Adjustable anatomic seat and steering wheel. Seat for the assistant with autonomous exit door. Control board complete with the following indicators:  
 engine oil pressure, fuel level, hour counter, alarm and regular working indicators.  
 Approved acoustic and visual overload indicator.

### ACCESSORIES ON REQUEST

Lifting hook. 360° hydraulic rotator for terminal equipment. Log pincers. Pincers for wooden sleepers. Pincers for rails. Clamshell bucket for stripping and digging. Clamshell bucket for loading ballast. Orange-peel grab for iron and metal scrap. Mechanical balance for pre-stressed reinforced concrete sleepers. Hydraulic balance for pre-stressed reinforced concrete sleepers. Ridger unit. Hydraulic rock breaker. Backhoe bucket. Couplers to the rails.

Fuel tank capacity..... 34.34 gal  
 Diesel engine oil..... 3.96 gal  
 Total capacity of hydraulic oil circuit..... 89.82 gal

Working machine weight.....44092.4 lbs